

# UMPQUA

## SOIL AND WATER CONSERVATION DISTRICT

P.O. Box 415, Reedsport, Oregon 97467, (541) 662-1341

Email: [rhonda@umpquasoilandwater.com](mailto:rhonda@umpquasoilandwater.com)

Website: <https://umpquasoilandwater.com>

Facebook: [www.facebook.com/UmpquaSoilandWaterConservationDistrict](http://www.facebook.com/UmpquaSoilandWaterConservationDistrict)

Newsletter – Winter 2025

Umpqua Soil and Water Conservation District is a non-regulatory agency here to help our community conserve natural resources through educational, financial and technical assistance. Since 1953 Umpqua Soil and Water Conservation District has been serving the residents of Northwestern Douglas County by partnering with landowners to empower them to be stewards and experts on their own land.

### UMPQUA SWCD EVENTS

#### Fruit Tree Pruning Workshop

Please join us on Saturday, January 17<sup>th</sup> from 11:00 a.m. until 1:00 p.m. for this hands-on learning workshop about fruit tree pruning.

At this workshop we will cover the proper techniques to improve tree health, increase fruit production, and how to shape your trees for long term success.

Where: Elkton Community Education Center  
15850 Oregon Highway 38 W  
Elkton, OR 97436

Cost: Free

When: Saturday, January 17<sup>th</sup> from 11:00 a.m.

Walk-ins welcome.

Topics include:

- When and why to prune in winter
- Tools and safety
- Pruning strategies for apples, pears, cherries, and plums
- Live demonstrations and Q&A

Perfect for beginners and experienced growers alike!

Registration requested by Friday, January 16<sup>th</sup> at Noon.  
Please call (541) 672-4461 to register.

**If you are from the Umpqua SWCD area, sign-up for Free-soil testing at this event!**

OSU EXTENSION SERVICE | DOUGLAS COUNTY SMALL FARMS™ PROGRAM

## FRUIT TREE PRUNING @ THE ECEC

Join us for a hands-on class to learn the art and science of winter pruning for your favorite fruit trees! Whether you're a backyard grower or a small-scale orchardist, this workshop will cover proper techniques to improve tree health, boost fruit production, and shape your trees for long-term success.

Topics include:

- When and why to prune in winter
- Tools and safety
- Pruning strategies for apples, pears, cherries, and plums
- Live demonstrations and Q&A

Perfect for beginners and experienced growers alike!

In partnership with Umpqua Soil & Water Conservation District.

Scan to register  
<https://beav.es/ZkU>

**FREE**  
Saturday,  
January 17, 2026  
11am - 1pm

**CLASS LOCATION**  
Elkton Community Education Cntr  
15850 OR-38 W,  
Elkton, OR97436

**REGISTRATION REQUIRED**  
Register by 1/16/2025  
<https://beav.es/ZkU>

**MORE INFORMATION**  
Logan Bennett | (541) 236-3015  
[logan.bennett@oregonstate.edu](mailto:logan.bennett@oregonstate.edu)

UMPQUA  
Soil & Water  
Conservation District

Oregon State  
University

OSU Extension Service prohibits discrimination in all its programs, services, activities, and materials. Accommodation requests related to a disability should be made by January 9, 2025 to Logan Bennett, 541-236-3015, [logan.bennett@oregonstate.edu](mailto:logan.bennett@oregonstate.edu).

### MISSION STATEMENT

“The mission of the locally led Umpqua Soil and Water Conservation District is to provide assistance to any individual, group, or agency in applying natural resource conservation practices for the wise use of their natural resources.”



## UMPQUA SWCD EVENTS



Umpqua SWCD will be hosting the Oregon Agricultural Trust Farm and Ranch Management Workshop at the Elkton Community Education Center Library on March 5, 2025 from 11:00 a.m. until 2:00 p.m. More information and registration details will be available soon on the Umpqua SWCD website.

## DIRECTOR RECRUITMENT-JOIN OUR BOARD!

**MAKE A DIFFERENCE**

The District is currently recruiting for Zone 2 and Zone 3 positions to be appointed to the Umpqua SWCD Board of Directors.

### Zone Director qualifications:

Must be a registered voter within the Umpqua SWCD boundary in Douglas County.

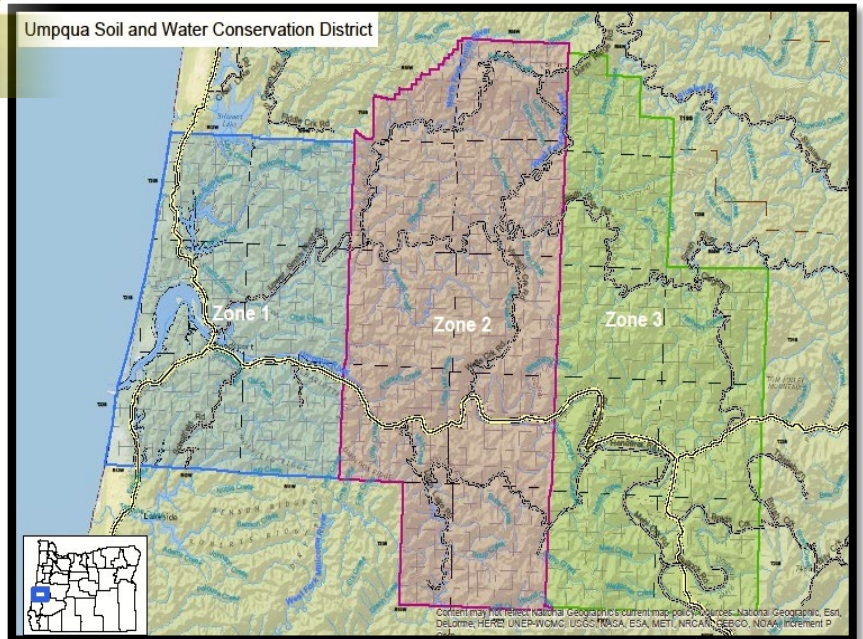
Reside within the zone being represented within the District.

Own or manage 10-acres of land within the zone represented, **or**

Serve at least one year as a Director or Associate Director and have a District-approved conservation plan.

An interactive map of the District and zones can be found at:

<https://geo.maps.arcgis.com/apps/instant/lookup/index.html?appid=31b2f5ae9d494ecfbf7ff2608061a63f>



**Please contact Umpqua SWCD if you are interested in becoming a Zone 2 or Zone 3 Director!**

## MEETINGS OF INTEREST

### **Umpqua Soil and Water Conservation District Board of Director's Meetings**

February 12<sup>th</sup>, March 12<sup>th</sup>, April 9<sup>th</sup>, May 14<sup>th</sup>, June 11<sup>th</sup>, July 9<sup>th</sup>, August 13<sup>th</sup>, September 10<sup>th</sup>

Meetings are generally held the 2nd Thursday of each month at 5:00 p.m. and held virtually.

Meeting information can be found on our website at <https://www.umpquasoilandwater.com/board-meetings>

### **Elk Creek Watershed Coalition Meetings**

Second Tuesday of each month, 7:00 p.m., in-person at the Drain Civic Center, 205 West A Avenue, Drain, Oregon 97435.

<https://www.umpquasoilandwater.com/elk-creek-watershed-coalition>

### **USDA Natural Resources Conservation Service Local Work Group Meeting**

2026 Meeting Date to be Determined

## NEWSLETTER DELIVERY

Would you like to receive this newsletter by email? Send us an email with "newsletter" in the subject line to [rhonda@umpquasoilandwater.com](mailto:rhonda@umpquasoilandwater.com) to let us know! If you are not yet receiving this newsletter and would like to, but don't use email, call (541) 662-1341 and we'll add you to our mailing list.



## HEAVY USE AREAS

Heavy Use Areas are crucial in livestock management for protecting pastures, improving animal health, and safeguarding water quality by concentrating animal and equipment traffic in a stabilized, durable area, especially during the wet season, thus preventing mud, erosion, and pollution while providing clean, safe footing for livestock. They function as designated "sacrifice areas" allowing other pastures to rest and regrow, while boosting overall farm efficiency, sustainability, and profitability.

### Key Benefits of Heavy Use Areas:

- **Pasture Protection:** Prevents overgrazing, soil compaction, and erosion on pasturelands, allowing for better plant health and water absorption.
- **Animal Health & Safety:** Reduces hoof problems (like thrush), rain scald, and infections by keeping animals dry and on firm footing, minimizing slips and falls.
- **Water Quality Improvement:** Controls runoff of manure and sediment into streams and wetlands, protecting aquatic ecosystems.
- **Manure Management:** Makes manure collection and removal easier and more efficient year-round, reducing odors, flies, and mosquitoes.
- **Operational Efficiency:** Saves time and effort by keeping feeding, watering, and handling areas accessible while reducing mud.
- **Improved Farm Aesthetics:** Creates a cleaner looking farm operation.
- **Location:** Place in well-drained spots, away from water bodies, and near where feeding/watering occur.
- **Materials:** Built with durable materials like geotextile fabric, gravel, wood chips, or sand to withstand heavy traffic.
- **Water Management:** Designed with gutters, swales, or proper grading to divert clean water away and manage polluted runoff.
- **Use:** Animals are confined to the heavy uses area during wet periods (fall/winter) and sometimes during summer, allowing pastures to recover.



Heavy use area under construction.



- Grade area.
- Place geotextile fabric.
- Cover with 6-12" of compacted gravel.
- Contact Umpqua SWCD for project technical assistance.

Interested in replacing your tide gates that may be undersized or not working as well as you would like?

**Umpqua SWCD can assist you with your tide gate replacement project(s)!**



Join us and our partners for a post tide gate installation tour in the future!

**Small Grants Program**

Oregon Watershed Enhancement Board Small Grants are available to District residents and producers for a variety of water quality/Ag WQ and habitat improvement projects through our Umpqua 7 Small Grant Team! Now is the time to start thinking about projects to implement in the Spring of 2026.

You know your property better than anyone else. Look around and let us know what you need assistance with. Contact the Umpqua Soil & Water Conservation District Office in order to begin the application process. Grants are available in amounts up to \$20,000.

Project Examples:  
Livestock Exclusion Fencing, Off-Stream Watering Systems, Heavy Use Livestock Areas such as Hardened Livestock Feeding Areas, Improved Livestock Crossings, Manure Storage Facilities, and More!

**Soil Testing: Are You Prepared for Spring?  
Do you know your soils pH?**

Contact the Umpqua Soil & Water Conservation District Office today to schedule your soil test in preparation for Spring lime applications. Lime can take several months after application to break down and change your soil pH. Lime should never be applied to pastures that are stressed or dormant, so please keep that in mind.

**Farm Conservation Planning**

Farm Conservation Plans are documents developed jointly by Umpqua Soil & Water Conservation District and land managers. Farm Conservation Plans include actions that land managers can take to achieve their land use goals while protecting water and other natural resources. The planning process takes into consideration the size of the farm, type of soils, slope of the land, proximity to streams or water bodies, type of livestock or crops, and resources such as machinery, buildings and available finances.

Umpqua SWCD’s Conservation Planner looks at changes that can be made to improve farm productivity and reduce impacts on natural resources. Some examples include stream-side fencing, gutters and downspouts, composting manure, pasture management and renovation, weed management, creating sacrifice areas, cross fencing and pasture rotation of livestock. Our Farm Conservation Planner can offer technical assistance on questions such as what grasses to plant, how to build a fence and when to mow.

Once the land manager has decided which changes they’d like to make on their property, they work with our Conservation Planner to set a tentative implementation schedule. Revisions of the schedule and the plan can be made as the goals and needs of the land manager change.

Farm Conservation Plans can help land managers, who have livestock, to meet the requirements of the Oregon Department of Agriculture Umpqua Basin Agricultural Water Quality Area Plan. This document can be found by going to:

<https://www.oregon.gov/oda/Documents/Publications/NaturalResources/UmpquaAWQMAreaPlan.pdf>

All aspects of Farm Conservation Planning services provided by Umpqua SWCD are free of charge and without obligation. Umpqua SWCD is a non-regulatory, non-enforcement agency.

**Contact us today!**

**(541) 662-1341 or**

[rhonda@umpquasoilandwater.com](mailto:rhonda@umpquasoilandwater.com)

[www.umpquasoilandwater.com](http://www.umpquasoilandwater.com)